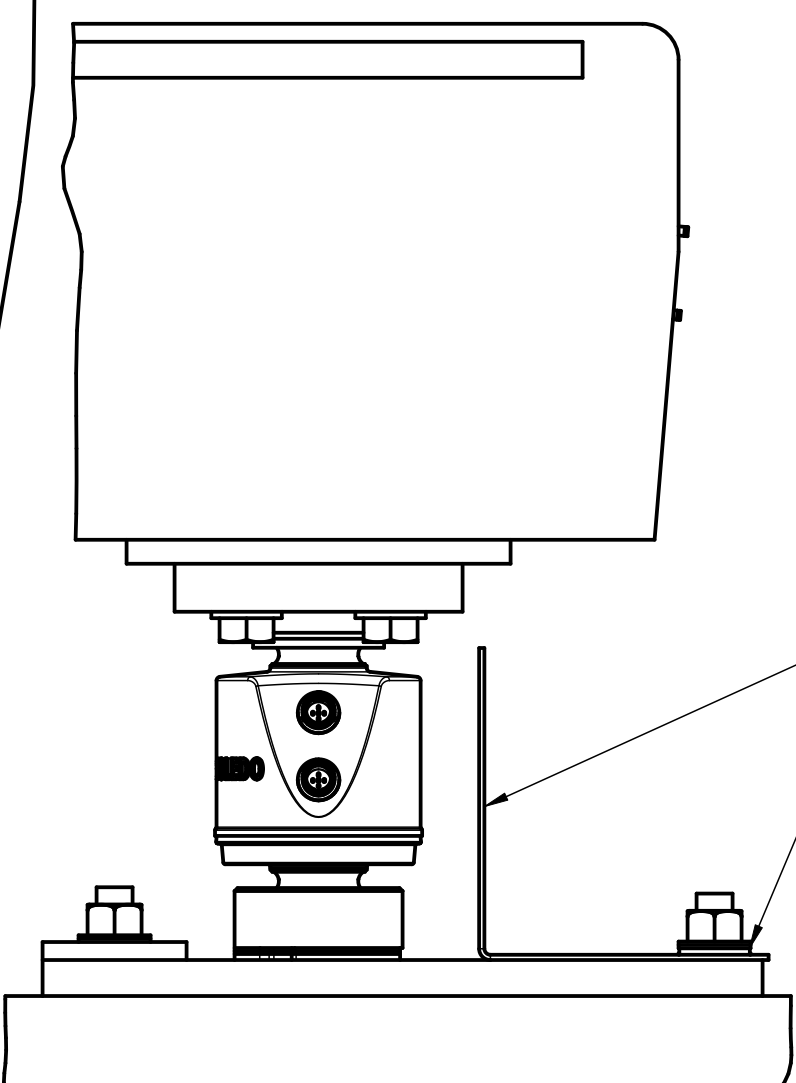
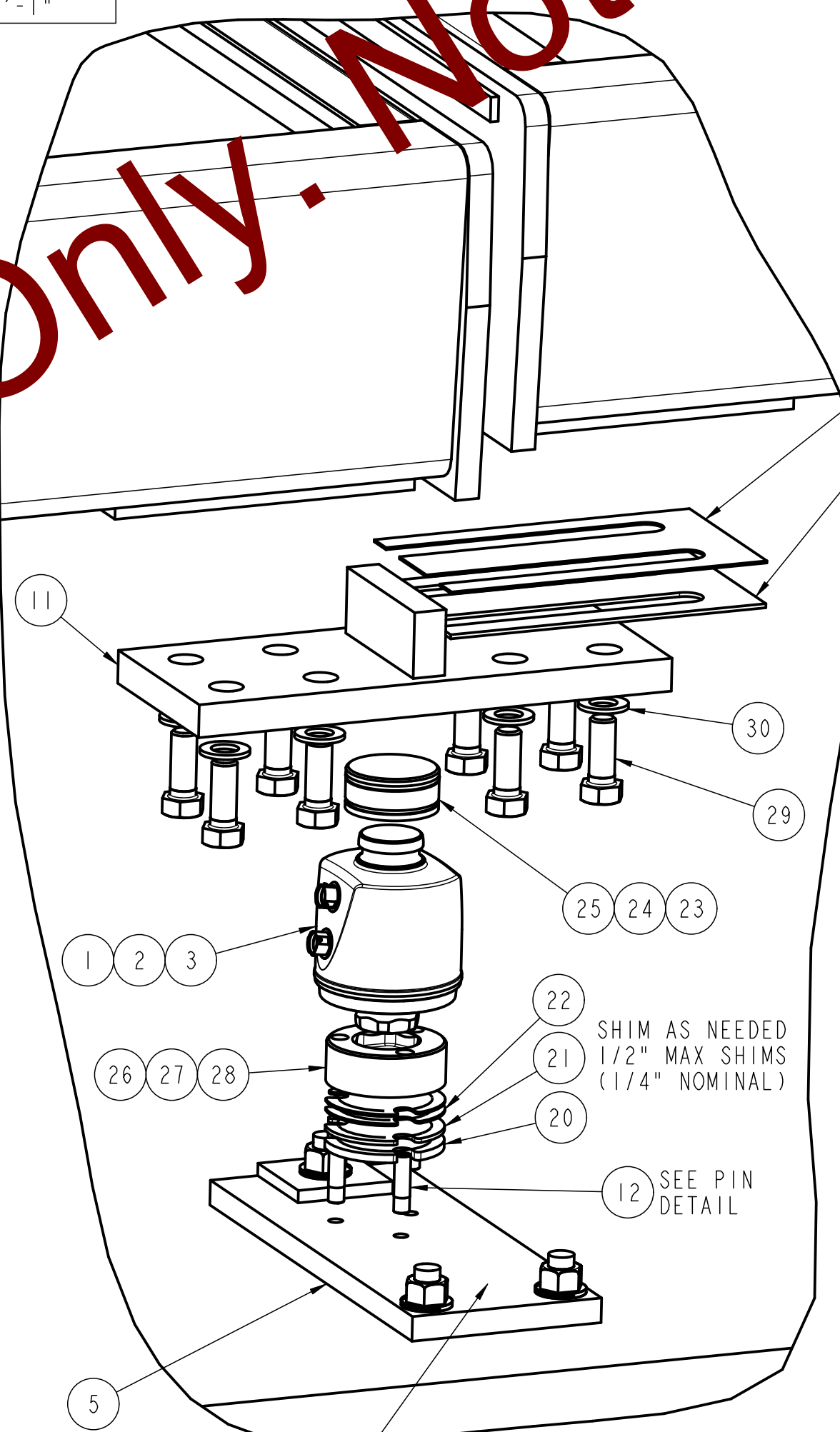
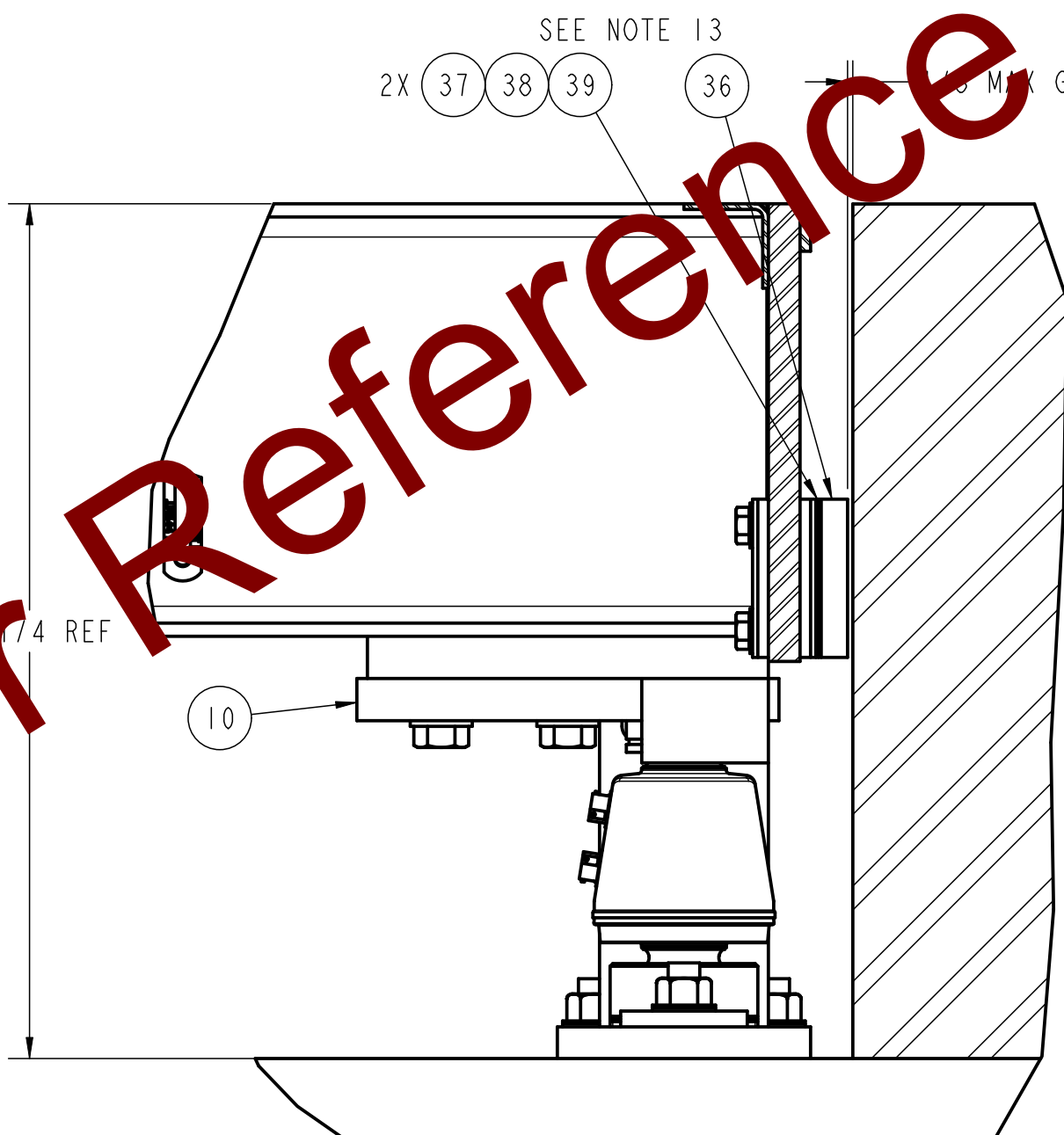
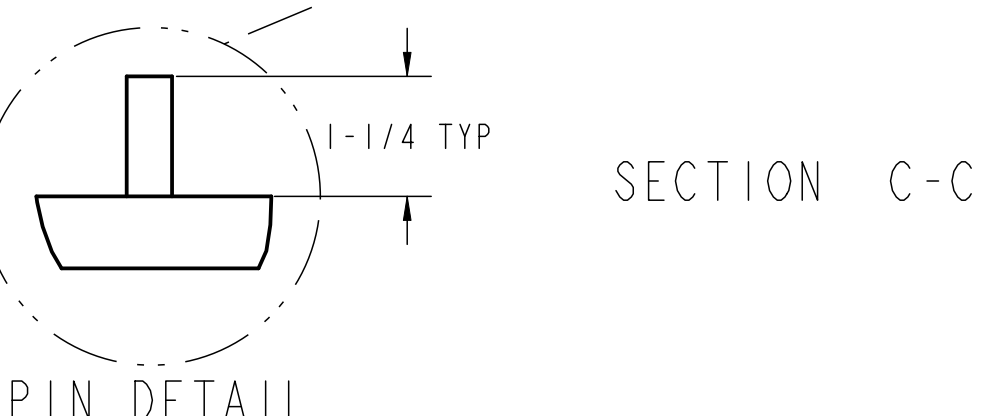
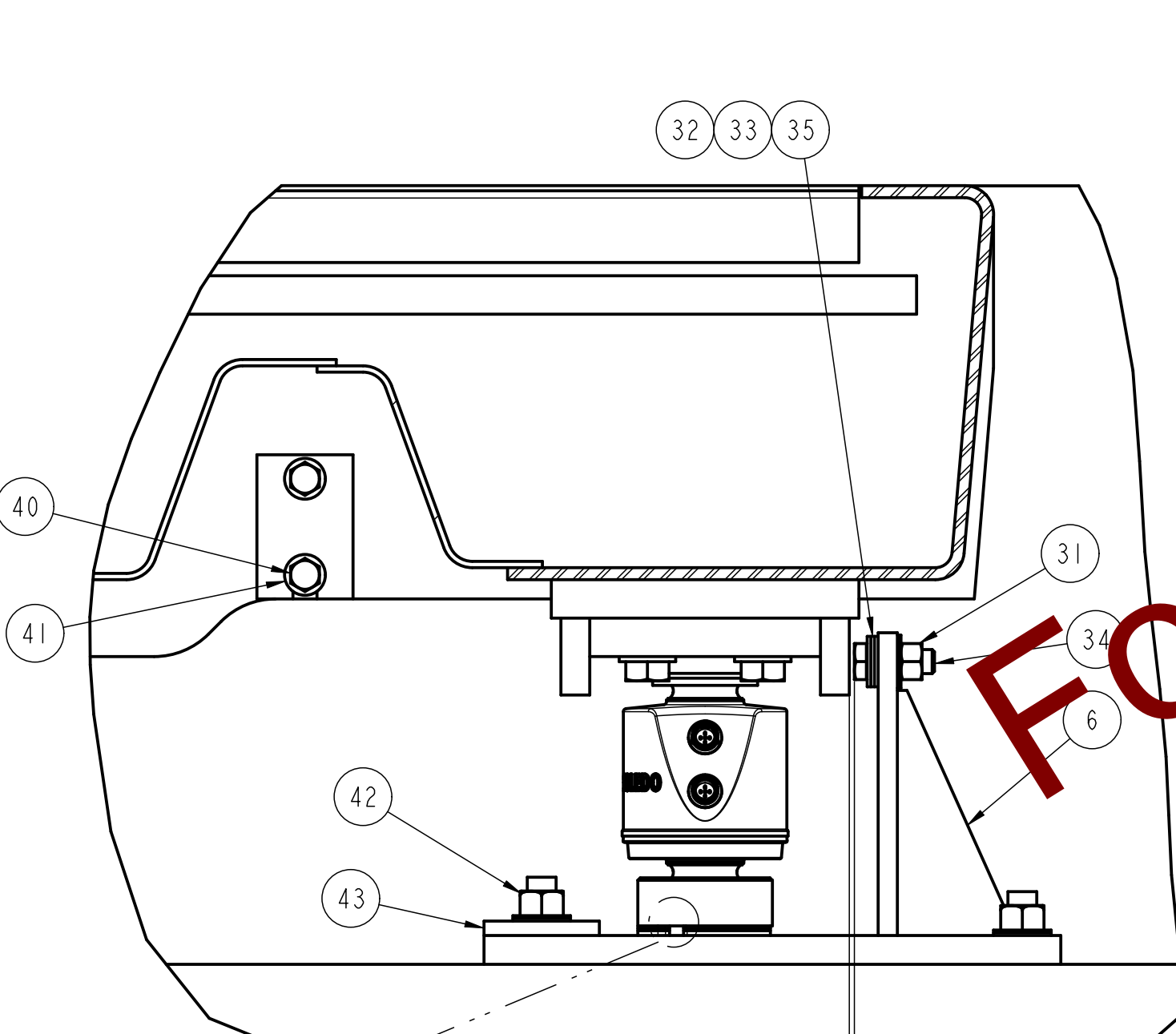


SIZE & CONFIGURATION				DIMENSIONAL CHART					
SCALE SIZE	MODULE 1	MODULE 2	MODULE 3	FOUNDATION OPENING ("A")	DECK LENGTH "B"	TOTAL L/C "C"	"D"	"E"	"F"
52.5'	17.5'	17.5'	17.5'	52'-8 1/4" -0/+1	52'-6 1/4"	52'-0 1/4"	17'-3"	17'-6 1/4"	17'-3"
55'	17.5'	20'	17.5'	55'-2 1/4" -0/+1	55'-0 1/4"	54'-6 1/4"	17'-3"	20'-0 1/4"	17'-3"
60'	20'	20'	20'	60'-2 1/4" -0/+1	60'-0 1/4"	59'-6 1/4"	19'-9"	20'-0 1/4"	19'-9"
70'	23.3'	23.3'	23.3'	70'-2 1/4" -0/+1	70'-0 1/4"	69'-6 1/4"	23'-1"	23'-4 1/4"	23'-1"

CONCRETE NOTES:

- USE 5500 PSI CONCRETE AT 28 DAY AGE. MAXIMUM SLUMP AS PLACED SHALL BE 4". THE REQUIRED FIBER REINFORCEMENT WILL BE PROVIDED BY METTLER TOLEDO AND SHALL BE ADDED TO THE CONCRETE MIX AT THE RATE OF ONE BAG PER CUBIC YARD.
- BEFORE PLACING CONCRETE, ALL MODULES LONGER THAN 17.5' MUST BE SHORED, WITH THE NOMINAL REQUIREMENT BEING FULL SUPPORT ACROSS THE WIDTH OF EACH MODULE WHERE THE SHORING IS LOCATED AT THE CENTER OF EACH MODULE (LENGTHWISE).
- CONCRETE SHALL BE DIRECT CURVED, PLACED AND THOROUGHLY CONSOLIDATED USING A SPUD TYPE VIBRATOR.
- USE OF CALCIUM CHLORIDE MIXTURE IS NOT PERMITTED.
- AFTER FINISHING, A POLYURETHANE TYPE (30% SOLIDS MIN) CURING COMPOUND SHALL BE APPLIED.
- REFER TO DRAWING IN201090101 FOR CONCRETE SPECIFICATION.
- ESTIMATED CONCRETE PER MODULE IN CUBIC YARDS (REF ONLY):
15' X 11' = 2.2 17.5' X 11' = 4.9 20' X 11' = 5.6 23' X 11' = 6.6



INSTALLATION INSTRUCTIONS

- USE BASEPLATES AS TEMPLATES TO DRILL INSIDE (LARGE) ANCHOR HOLES PER FOUNDATION DRAWING DIMENSIONS, WHICH ARE ALSO DUPLICATED IN THE TABLE TO THE LEFT OF THESE NOTES. SET BASEPLATES IN PLACE. INSTALL OUTSIDE ANCHOR WITH CLAMP BAR, TIGHTEN TO SET ANCHOR, AND THEN LOOSEN SO THAT BASEPLATE CAN BE FREELY MOVED. INSTALL LOWER RECEIVER MOUNTING PINS AND BOTTOM HEX RECEIVERS. PLACE LOCATING TOOLS (AVAILABLE FROM METTLER TOLEDO) ON LOWER RECEIVERS.
- INSTALL COUPLER/RECEIVER PLATES, END RECEIVER PLATES, AND TOP RECEIVERS ON FIRST MODULE. FASTENERS SHOULD BE SEATED AND SNUG BUT NOT TIGHTENED.
- SET FIRST MODULE ON LOCATING TOOLS AT END OF FOUNDATION.
- INSTALL COUPLER/RECEIVER PLATES AND TOP RECEIVERS ON THE NEXT (MIDDLE) MODULE, OPPOSITE THE END THAT WILL CONNECT TO THE PREVIOUS MODULE.
- PLACE THE MODULE ON LOCATING TOOLS AND THE COUPLER/RECEIVER PLATES OF THE PREVIOUS MODULE. PULL THE MODULES TOGETHER, AND THEN INSTALL BOLTS IN THE COUPLER/RECEIVER PLATES (BUT DO NOT TIGHTEN).
- REPEAT STEPS 4 AND 5 UNTIL ALL MIDDLE MODULES HAVE BEEN PLACED.
- INSTALL END RECEIVER PLATES AND TOP RECEIVERS ON LAST (END) MODULE, OPPOSITE OF THE END THAT WILL CONNECT TO THE PREVIOUS MODULE. AGAIN, THE BOLTS SHOULD ONLY BE SNUGGED.
- PLACE THE LAST (END) MODULE ON LOCATING TOOLS AND THE COUPLER/RECEIVER PLATES OF THE PREVIOUS MODULE. PULL THE MODULES TOGETHER, AND INSTALL BOLTS IN THE COUPLER/RECEIVER PLATES (BUT DO NOT TIGHTEN).
- ADJUST THE POSITIONS OF THE BASEPLATES AND MODULES AS NECESSARY TO SEAT THE LOCATING TOOL FLANGES ON THE RECEIVER FLANGES. USE RECEIVER SHIMS IF NECESSARY. CENTER THE SCALE WITHIN THE FOUNDATION.
- AT THIS POINT, COUPLER SHIMS MAY BE USED IF NEEDED TO FILL ANY GAP BETWEEN THE COUPLER/RECEIVER PLATES AND MODULES.
- INSTALL AND TIGHTEN REMAINING BASEPLATE ANCHORS. APPLY LOCTITE TO COUPLER/RECEIVER PLATE AND END RECEIVER PLATE BOLTS AND TORQUE TO 100 LB-FT.
- GREASE THE BEARING SURFACES AT THE ENDS OF THE LOAD CELLS WITH THE SUPPLIED LUBRICANT. INSTALL LOAD CELLS.
- INSTALL END BUMPER COMPONENTS. ADJUST END BUMPER GAPS AS REQUIRED. WHEN ADJUSTING THE END BUMPER, ALL SHIMS MUST REMAIN WITH THE ASSEMBLY. RELOCATE SHIMS FROM ONE SIDE OF THE ENDPLATE TO THE OTHER TO ADJUST THE END GAP. COMPLETE REMOVAL OF ANY SHIMS FROM THE ASSEMBLY WILL RESULT IN DAMAGE TO THE BUMPER ASSEMBLY. NOTE THAT SEASONAL BUMPER ADJUSTMENTS MAY BE REQUIRED.
- LOCATE THE LATERAL BUMPER BOLTS, WASHERS, NUTS, SHIMS AND INSTALL. SET THE LATERAL BUMPER GAP AS SHOWN IN SECTION C-C.
- TIGHTEN ALL LATERAL BUMPER FASTENERS.
- REFER TO WIRING DIAGRAM FOR CABLING AND SENSING.

52	6	69033693	CAPLUG, #19, FOR ENDPLATE HOLES
51	12	69033694	CAPLUG, #16, FOR SIDE LIFTING HOLES
50	1	68004258	CONNECTOR CLEANER
49	3	61038104	LOCTITE #262 THREADLOCKER
48	2	68004326	RECEIVER GREASE
47	8	61038102	WASHER, 3/4N, ZN
46	4	61038101	7461, SIDE SHIELD
45	2	61077016	7461, SHIM, RCVR PLATE, 16 GA
44	2	61077015	7461, SHIM, RCVR PLATE, 11 GA
43	8	69034087	CLAMP BAR, FOR 3/4" ANCHOR
42	24	68004325	ANCHOR BOLT
41	8	61037252	WSHR, PLAIN, 1/2, ZN
40	8	61072738	BOLT, 1/2-13X2.25, HHCS, ZN
39	8	61037796	7461, SHIM, RCVR PLATE, 1/16 SHIM
38	8	61037795	7461, END BMPR, 1/8 SHIM
37	8	61037794	7461, END BMPR, 1/4 SHIM
36	4	61037793	7461, END BUMPER
35	12	68004062	WASHER, 5/8N, F436
34	4	61037989	BOLT, 5/8-11X1.75, A325
33	4	68004109	SHIM, SLOTTED, 1/32"
32	4	68004108	SHIM, SLOTTED, 1/16"
31	4	61038115	NUT, 5/8-11, HEX, ZN, GR8
30	48	68004065	WASHER, 3/4N, A325
29	48	61038114	BOLT, 3/4-10 X 2, ZN, GR8
28	8	61043498	PDX LOWER RECEIVER
27	8	30283111	GDD LOWER RECEIVER
26	8	61046447	BOTTOM HEX RECEIVER FOR 0782
25	8	61043499	PDX UPPER RECEIVER & O-RING ASSY
24	8	30283112	GDD UPPER RECEIVER & O-RING ASSY
23	8	61046446	TOP RECEIVER (W/ O-RING) FOR 0782
22	16	61043491	RECEIVER SHIM, 1/16" THICK (16 GA)
21	8	61043490	RECEIVER SHIM, 1/8" THICK (11 GA)
20	8	61043489	RECEIVER SHIM, 1/4" THICK
ITEM	QTY	PART NUMBER	DESCRIPTION
HARDWARE KIT OF PARTS:			
			61087134
			30291255
			61087135
19	1	61087135	HARDWARE KIT OF PARTS, 0782 (VTC100)
18	1	30291255	HARDWARE KIT OF PARTS, GDD (VTC100)
17	1	61087134	HARDWARE KIT OF PARTS, PDX (VTC101)
16	REF	61023474	MANHOLE COVER AND RING
15	REF	61085813	FIBER REINFORCEMENT, 1.5# BAG
14	1	***	WIRING KIT OF PARTS
13	1	61043158	TOUCH-UP PAINT KIT
12	24	61043497	PIN, PDX LOWER RECEIVER
11	4	61046440	VTX10X WLDMT MID RCVR ASSY
10	4	61077682	VTX10X, WLDMT, END UPPER RCVR ASSY
9	1	**	TERMINAL MODULE
8	1	**	MIDDLE MODULE
7	1	**	FIRST MODULE
6	4	61046448	VTX 10X WLDMT, END BASEPLATE
5	4	61045779	VTX 10X BASEPLATE
4	1	61071325	Data Label, MTMS
3	8	42904891	LOAD CELL, PDX, 50mt CAPACITY
2	8	72236271	LOAD CELL, GDD, 30mt CAPACITY
1	8	71201709	LOAD CELL, 0782, 30+ CAPACITY
ITEM	QTY	PART NUMBER	DESCRIPTION

VTC100 (ANALOG) ONLY
VTC100 (GDD) ONLY
VTC101 (PDX) ONLY

VTC100 ONLY

VTC101 (PDX) ONLY
VTC100 (GDD) ONLY
VTC100 (ANALOG) ONLY

MAJOR BILL OF MATERIAL

REV	CHANGE	BY	DATE	SCALE	DATE	REV
A	ADDED CAP PLUGS AND SIDE SHIELDS	JLB	1/5/11	SCALE 0.250	DATE 06/03/10	
B	CONCRETE PSI WAS 4000	KRS	9/7/11	DRN JLB/APD JLB		
C	ADDED GDD OPTION AND N109 (WAS TC208393)	CAK	11/12/15	TITLE VTC10X GENERAL LAYOUT, 3-MOD SCALE, ABOVE GROUND INSTALLATION		
UNLESS OTHERWISE SPECIFIED, ALL DIMENSIONS ARE IN INCHES, AND DIMENSIONAL TOLERANCES ARE: FRACTIONAL DECIMAL ANGULAR .XX ± .02 .X ± .5° ±1/16 .XXX ± .005						
THIS PRINT IS FURNISHED WITH THE UNDERSTANDING THAT THE ESSENCE THEREOF WILL NOT BE REPRODUCED IN WHOLE OR IN PART WITHOUT WRITTEN AUTHORIZATION OF METTLER-TOLEDO, LLC. ALL DESIGNS ARE THE PROPERTY OF METTLER-TOLEDO, LLC. AND WILL BE PROTECTED BY PATENTS.						
61803139						REV

METTLER TOLEDO